

# MONTHLY MEMBERSHIP PROGRESS REPORT

District 318 B

Results as of: 6/30/2024

GMT:

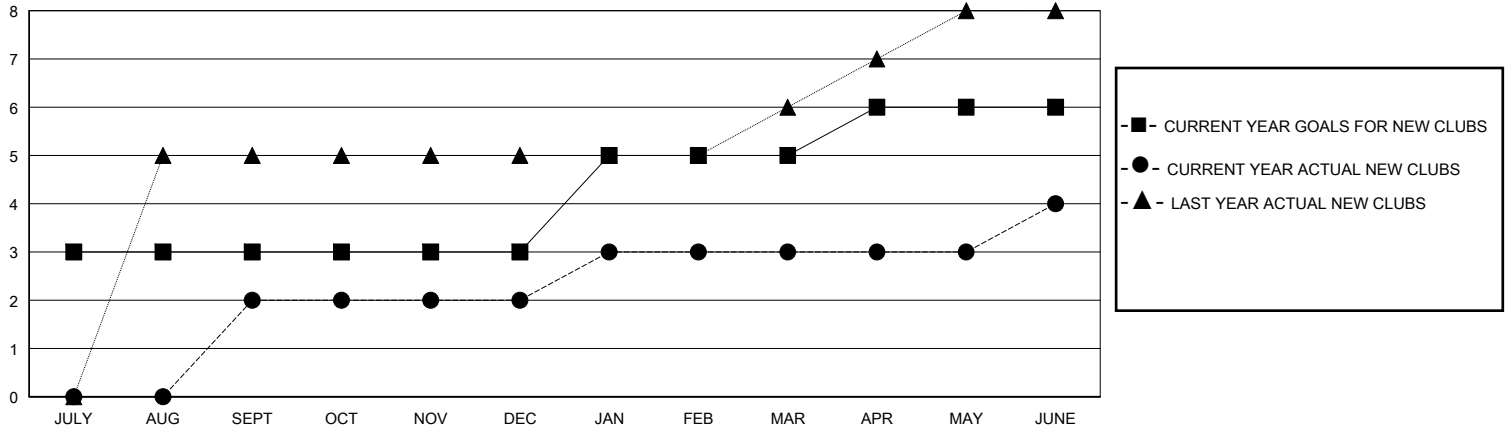
LOCATION INDIA

GMT CA

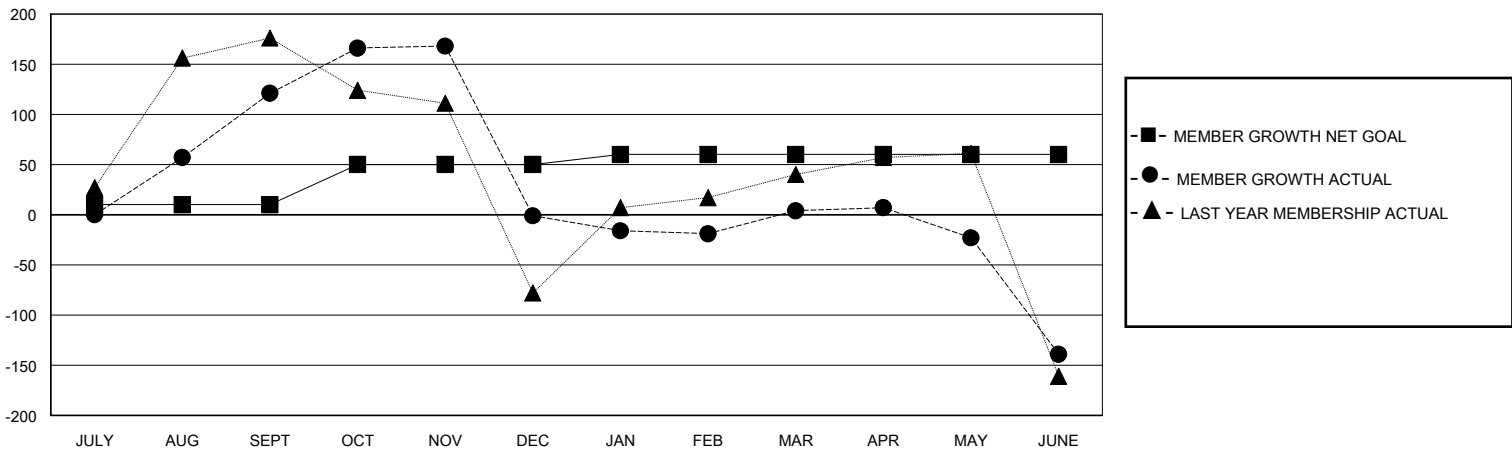
Clubs			
RESULTS FOR 2023-2024			
QUARTER	NEW CLUB GOAL	NEW CLUBS	DROPPED CLUBS
JULY/AUG/SEPT	3	2	0
OCT/NOV/DEC	0	0	6
JAN/FEB/MAR	2	1	2
APR/MAY/JUNE	1	1	0

Members			
RESULTS FOR 2023-2024			
QUARTER	MEMBER GROWTH NET GOAL	MEMBER GROWTH ACTUAL	DROPPED MEMBERS ACTUAL (including transfers)
JULY/AUG/SEPT	10	218	58
OCT/NOV/DEC	40	98	218
JAN/FEB/MAR	10	109	79
APR/MAY/JUNE	0	94	222

GOALS AND ACTUAL NEW CLUBS CUMULATIVE



GOALS AND ACTUAL MEMBERS CUMULATIVE



<b>DROPPED CLUBS: 8</b>	71 CLUBS OF 127 ADDED 1 OR MORE NEW MEMBERS	<b>GENDER DISTRIBUTION</b>	
		MALE 3,053 (88.75%)	FEMALE 387 (11.25%)
<b>DROPPED MEMBERS</b>		<a href="#">CLICK HERE FOR CUMULATIVE MEMBERSHIP DATA</a>	TOTAL FAMILY UNIT MEMBERS 679
DECEASED 16	CLUB CANCELLED 149		FAMILY MEMBERS PAYING HALF DUES 354
OTHER 412	TOTAL 577		